



Celebrating  
28 Glorious  
Years

SCIENCE  
CATALOGUE  
JULY-2024



*Latest Best Quality Educational Teaching Aids*

# SCIENCE LABS DEVELOPED & SET UP BY US AT “THE VEDIC ERA PROGRESSIVE SCHOOL, SONEPAT, HARYANA”

**PHYSICS LAB**



**CHEMISTRY LAB**



**BIOLOGY LAB**





# HEALTH SECTION

## HEALTH CARE SERIES

Laminated - Size 50 x 75 cms  
Each ₹ 130.00

- HC-01** Health Rules
- HC-02** Causes of Diseases
- HC-03** Prevention of Diseases
- HC-04** Effects of Alcohol
- HC-05** Tobacco & Habit Forming Drugs
- HC-06** Clean Body
- HC-07** Clean Water
- HC-08** Constituents of Food
- HC-09** Malnutrition
- HC-10** Immunization



## NEW FAMILY PLANNING CHARTS

Laminated - Size 50 x 75 cms  
Each ₹ 130.00

- FP-01** Unplanned Family
- FP-02** Small Family-Happy Family (Planned Family)
- FP-03** Temporary Methods of Family Planning
- FP-04** Space Your Child's Birth

## PREVENT THE DISEASES

Laminated - Size 50 x 75 cms Each ₹ 130.00

- |                             |                                    |
|-----------------------------|------------------------------------|
| <b>PD-01</b> Cholera        | <b>PD-13</b> Dysentery             |
| <b>PD-02</b> Malaria        | <b>PD-14</b> Hepatitis             |
| <b>PD-03</b> AIDS           | <b>PD-15</b> Heart Attack          |
| <b>PD-04</b> Plague         | <b>PD-16</b> Diabetes              |
| <b>PD-05</b> Tuberculosis   | <b>PD-17</b> Asthma                |
| <b>PD-06</b> Leprosy        | <b>PD-18</b> Arthritis             |
| <b>PD-07</b> Influenza      | <b>PD-19</b> Thyroid               |
| <b>PD-08</b> Jaundice       | <b>PD-20</b> Blood Pressure        |
| <b>PD-09</b> Cancer         | <b>PD-21</b> Dengue                |
| <b>PD-10</b> Typhoid        | <b>PD-22</b> Measles               |
| <b>PD-11</b> Viral Diseases | <b>PD-23</b> Food Poisoning        |
| <b>PD-12</b> Chicken Pox    | <b>PD-24</b> Poliomyelitis (Polio) |



## FOOD & NUTRITION

Laminated - Size 70 x 100 cms ₹ 220.00

- FN-01** Our Food
- FN-02** Proteins
- FN-03** Fats
- FN-04** Carbohydrates
- FN-05** Vitamins
- FN-06** Minerals
- FN-07** Water & Roughage
- FN-08** Deficiency Diseases
- FN-09** Over Nutrition Dis-orders
- FN-10** Food's Nutritive Value



## MOTHERCRAFT & CHILD WELFARE

Laminated - Size 50 x 75 cms Each ₹ 130.00

- |   |   |
|---|---|
| <b>MCW-01</b> Diet in Pregnancy                         | <b>MCW-06</b> Baby's Development              |
| <b>MCW-02</b> Average Height & Weight Chart of Children | <b>MCW-07</b> Baby's Weight (Birth -10 years) |
| <b>MCW-03</b> Preparing for the Delivery                | <b>MCW-08</b> Care of Mother during Pregnancy |
| <b>MCW-04</b> Correct & Regular Feeding                 | <b>MCW-09</b> Baby's Habits                   |
| <b>MCW-05</b> Baby's Diet                               |   |

## FIRST AID CHARTS

**Laminated - Size 50 x 75 cms Each ₹ 130.00**

- FAC-01** Skeleton & Circulatory System
- FAC-02** Triangular Bandages
- FAC-03** Roller Bandages
- FAC-04** Fractures
- FAC-05** Artificial Respiration
- FAC-06** Transport of the injured
- FAC-07** Unconsciousness
- FAC-08** Haemorrhage
- FAC-09** Electric Shock Treatment
- FAC-10** Emergency Resuscitation
- FAC-11** Removal of foreign bodies from eye, ear, nose
- FAC-12** Burns & Scalds
- FAC-13** Snakes & Their Bites
- FAC-14** Poisons and their Antidotes
- FAC-15** Outline of First Aid & Appliances



## YOGASAN CHARTS

**Laminated - Size 50 x 75 cms Each ₹ 130.00**

- YO-01** Shuddhi Kriyas-Shat Karmas
- YO-02** Shankh Prakshalan
- YO-03** Surya Namaskar
- YO-04** Yog Mudras, Padmasan & Matsyasan
- YO-05** Paschimottanasan & Ardh Matsyendrasan
- YO-06** Vajrasan, Ustrasan & Supt Vajrasan
- YO-07** Bhujangasan, Shalbhhasan, Dhanurasan & Mayurasan
- YO-08** Pawan Muktasan & Chakrasan
- YO-09** Sarvangasan & Halasan
- YO-10** Bandhas & Pranayams
- YO-11** Spine & Related Organs
- YO-12** Healthy Eye





## LAB SAFETY CHARTS

**Laminated - Size 30 x 45 cms Set of 12 ₹ 840.00**

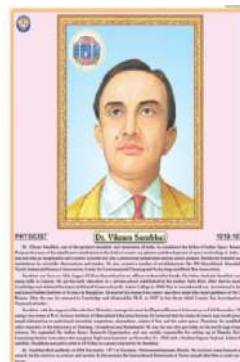
- |   |   |
|---|---|
| <p><b>LSC-01</b> Protect Yourself, Dress Properly</p> <p><b>LSC-02</b> Always Wash Your Hands Before &amp; After the Experiment</p> <p><b>LSC-03</b> Keep the Testing Area &amp; Vessels Clean Before &amp; After the Experiment</p> <p><b>LSC-04</b> Never Eat or Drink while Performing Experiments</p> <p><b>LSC-05</b> Avoid Using Glassware that is Cracked or Chipped</p> <p><b>LSC-06</b> Keep Your face Away from Reaction Vessels</p> <p><b>LSC-07</b> Never Suck Liquid Chemicals by Mouth, Use a Pipette Bulb</p> <p><b>LSC-08</b> Beware! Hot &amp; Cold Look Alike</p> | <p><b>LSC-09</b> Never Touch or Taste Chemicals</p> <p><b>LSC-10</b> Always Experiment Under Supervision, Inform Supervisor in Case of Accident</p> <p><b>LSC-11</b> Act Responsibly, Don't Fool Around in the Laboratory</p> <p><b>LSC-12</b> Always Keep the Fire Extinguisher &amp; First Aid Box within Reach</p> |
|---|---|



## LIFE SKETCH OF SCIENTISTS

**Laminated - Size 45 x 57 cms Each ₹ 130.00**

- |  |  |
|--|--|
| <p><b>LSS-01</b> Albert Einstein</p> <p><b>LSS-02</b> A.P.J. Abdul Kalam</p> <p><b>LSS-03</b> Archimedes</p> <p><b>LSS-04</b> Birbal Sahni</p> <p><b>LSS-05</b> C.V. Raman</p> <p><b>LSS-06</b> Darwin</p> <p><b>LSS-07</b> Galileo Galilei</p> <p><b>LSS-08</b> H.J. Bhabha</p> <p><b>LSS-09</b> J.C. Bose</p> <p><b>LSS-10</b> Louis Pasteur</p> | <p><b>LSS-11</b> Madam Curie</p> <p><b>LSS-12</b> Meghnad Saha</p> <p><b>LSS-13</b> Mendeleev</p> <p><b>LSS-14</b> Newton</p> <p><b>LSS-15</b> Raja Ramanna</p> <p><b>LSS-16</b> Ramanujan</p> <p><b>LSS-17</b> Rutherford</p> <p><b>LSS-18</b> S.N. Bose</p> <p><b>LSS-19</b> Sarabhai</p> <p><b>LSS-20</b> Thomas Edison</p> |
|--|--|



## DISASTER MANAGEMENT CHARTS

**Laminated - Size 70 x 100 cms ₹ 220.00**

- |   |  |
|---|--|
| <p><b>DMS-01</b> What is a Disaster</p> <p><b>DMS-02</b> Disaster Management Cycle-1</p> <p><b>DMS-03</b> Disaster Management Cycle-2</p> <p><b>DMS-04</b> Earthquake</p> <p><b>DMS-05</b> Tsunami</p> <p><b>DMS-06</b> Flood</p> | <p><b>DMS-07</b> Cyclone</p> <p><b>DMS-08</b> Forest Fire</p> <p><b>DMS-09</b> Landslide</p> <p><b>DMS-10</b> Nuclear Disaster</p> <p><b>DMS-11</b> Chemical Disaster</p> <p><b>DMS-12</b> Biological Disaster</p> |
|---|--|



## ENVIRONMENTAL SCIENCE CHARTS

**Laminated - Size 50 x 70 cms Each ₹ 140.00**

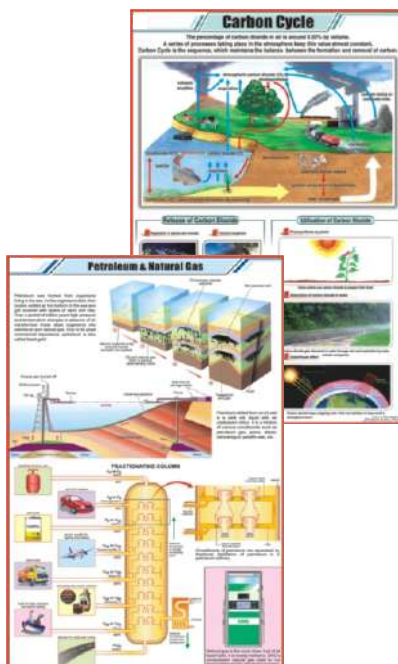
- ES-01** Garbage Management
- ES-02** Sewage Treatment Plant
- ES-03** Global Warming & Green House Effect



## GENERAL SCIENCE CHARTS

**Laminated - Size 58 x 90 cms Each ₹ 220.00**

- STG-01** The Cell Theory
- STG-02** DNA
- STG-03** RNA
- STG-04** Levels of Organization
- STG-05** Origin of Life
- STG-06** Cellular Respiration
- STG-07** Animal Husbandry
- STG-08** Economic Plants
- STG-09** Basic Agricultural Practices
- STG-10** Medicinal Plants - I
- STG-11** Medicinal Plants - II
- STG-12** Energy Needs
- STG-13** Fossil Fuels
- STG-14** Petroleum & Natural Gas
- STG-15** Renewable Sources of Energy
- STG-16** Nuclear Energy
- STG-17** Bio-Gas
- STG-18** Nitrogen Cycle
- STG-19** Oxygen Cycle
- STG-20** Carbon Cycle



- STG-21** Fire & Fire Extinguishers
- STG-22** Soil- A natural Resource
- STG-23** How Soil is formed and Soil Profile
- STG-24** Types of Soils in India
- STG-25** Food Chain in Forest Ecosystem
- STG-26** Solar Cooker
- STG-27** Water Harvesting
- STG-28** Purification of Water
- STG-29** Poultry
- STG-30** Sericulture (L.H. Silkworm)
- STG-31** Apiculture (L.H. Honeybee)
- STG-32** Food Pyramid
- STG-33** Microorganisms
- STG-34** Mutation
- STG-35** Enzymes
- STG-36** DNA Replication
- STG-37** Osmosis
- STG-38** Evidence of the Evolution of Life
- STG-39** Food Chain in Pond Ecosystem
- STG-40** Food Chain in Desert Ecosystem

## PHYSICS CHARTS

**Laminated - Size 58 x 90 cms Each ₹ 220.00**

- STP-01** Motion
- STP-02** Changes Around Us
- STP-03** Metric Weights and Measures
- STP-04** Measurements
- STP-05** Sound
- STP-06** Wave Motion
- STP-07** Simple Machine
- STP-08** The Lever
- STP-09** Archimedes Principal
- STP-10** Pascal's Law
- STP-11** Reflection of Light
- STP-12** Refraction Through a Glass Slab
- STP-13** Refraction Through Prisms
- STP-14** Refraction of Light Through lenses
- STP-15** Optical Instruments
- STP-16** Microscope
- STP-17** Telescope
- STP-18** Eye and its Defects
- STP-19** Electric Current-Sources-Effects
- STP-20** Static Electricity
- STP-21** Current Electricity
- STP-22** Ohm's Law & Electrical Resistance
- STP-23** Electric Circuit's Components Symbols
- STP-24** Magnetism
- STP-25** Properties of a Magnet, Making a Magnet
- STP-26** Electromagnetism
- STP-27** Electromagnetic Induction
- STP-28** Electric Motor
- STP-29** Electric Bell



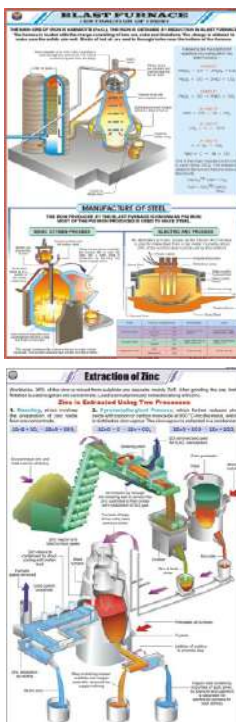
- STP-30** Electric Generator
- STP-31** Dynamo
- STP-32** Force
- STP-33** Friction
- STP-34** Gravitation
- STP-35** Moment and Couple
- STP-36** Work and Power
- STP-37** Nuclear Fusion
- STP-38** Nuclear Fission
- STP-39** Nuclear Reactor
- STP-40** Radioactivity
- STP-41** Radio Telescope
- STP-42** X-Ray
- STP-43** Television
- STP-44** Multistage Rocket
- STP-45** Wind Mill
- STP-46** Petrol Engine
- STP-47** Steam Engine
- STP-48** Diode
- STP-49** Universe I (Life Cycle of a Star)
- STP-50** Universe II (Comets & Meteors)
- STP-51** Star Map
- STP-52** Newton's Laws of Motion
- STP-53** Simple Electric Current
- STP-54** Measuring Instruments
- STP-55** Energy
- STP-56** Heat and Temperature
- STP-57** Different Types of Satellite



## CHEMISTRY CHARTS

Laminated - Size 58 x 90 cms Each ₹ 220.00

- STC-01** Atom And Atomic Structure
- STC-02** Chemical Reactivity of an Element
- STC-03** Chemical Reaction & its Characteristics
- STC-04** Classification of Chemical Reactions
- STC-05** Valencies of Elements
- STC-06** Chemical Bonds
- STC-07** Combustion
- STC-08** Separation of Substances
- STC-09** Atmosphere and Composition of Air
- STC-10** Occurrence and Forms of Carbon
- STC-11** Carbon dioxide and Carbon Monoxide
- STC-12** Carbonates and Bicarbonates
- STC-13** Sulphur
- STC-14** Mole Concept
- STC-15** Composition of Water by Weight
- STC-16** Different Kinds of Cells
- STC-17** Electroplating & Corrosion
- STC-18** Cement and Concrete
- STC-19** Manufacture of Glass
- STC-20** Alkanes
- STC-21** Alkenes
- STC-22** Alkynes
- STC-23** Alcohols
- STC-24** Esters
- STC-25** Organic Acids
- STC-26** Soaps and Detergents

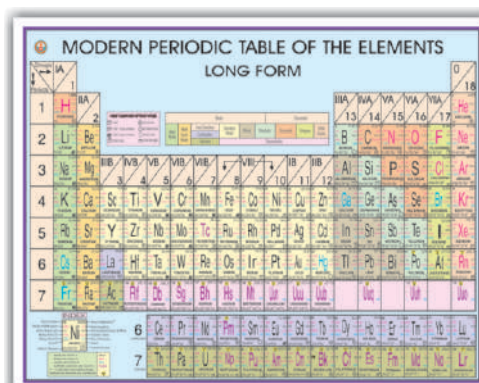


- STC-27** Plastics
- STC-28** Synthetic Fibres
- STC-29** Blast Furnace
- STC-30** Aluminium Metallurgy
- STC-31** Copper Metallurgy
- STC-32** Extraction of Zinc
- STC-33** Prep. of Sodium Hydroxide & Sodium Carbonate
- STC-34** Prep. of Nitrogen and Nitric acid
- STC-35** Prep. of Chlorine and Hydrochloric acid
- STC-36** Prep. of Sulphur Dioxide and Sulphuric acid
- STC-37** Prep. of Ammonia and Haber Process
- STC-38** Prep. of Oxygen and Liquefaction of Air
- STC-39** Prep. of H<sub>2</sub> & Co<sub>2</sub>
- STC-40** Manufacture of Bleaching Powder
- STC-41** Manufacture of Phosphorus
- STC-42** Crystal Lattices
- STC-43** Close Packed Structures
- STC-44** Sodium Chloride Crystal
- STC-45** Acids, Bases and Salts
- STC-46** Electrolysis
- STC-47** Atoms & Molecules
- STC-48** Solids, Liquids & Gases
- STC-49** Shapes of Atomic Orbitals
- STC-50** Chemical Equilibrium
- STC-51** Kinetic Theory
- STC-52** Electronic Configuration

## CHEMISTRY LAB CHARTS

- PT-01** Long Form Periodic Table 140x100 cms
- PT-02** Periodic Table 100 x 70 cms
- PT-03** Long Form Periodic Table 100 x 70 cms
- CL-01S** Laboratory Safety Chart 70 x 100 cms
- CL-02S** Laboratory Techniques Chart 70 x 100 cms
- CL-03S** pH Colour Chart 70 x 100 cms
- CL-04S** Laboratory First Aid Chart 70 x 100 cms

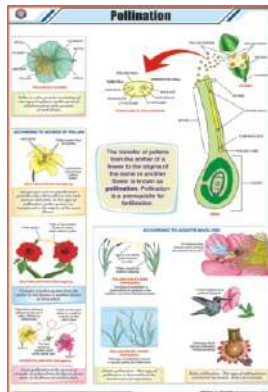
- Laminated** ₹ 410.00
- Laminated** ₹ 200.00
- Synthetic** ₹ 280.00
- Synthetic** ₹ 280.00
- Synthetic** ₹ 280.00
- Synthetic** ₹ 280.00
- Synthetic** ₹ 280.00



## BOTANY CHARTS

**Laminated - Size 58 x 90 cms Each ₹ 220.00**

- STB-01** Plant Kingdom
- STB-02** Typical Plant
- STB-03** Typical Plant Cell
- STB-04** Plant Cell Organelles
- STB-05** Plant Tissues
- STB-06** Plant Cell Mitosis
- STB-07** Plant Cell Meiosis
- STB-08** T.S. Stem - Monocot
- STB-09** T.S. Dicot Stem (Sunflower)
- STB-10** T.S. Root - Monocot
- STB-11** T.S. of Dicot Root
- STB-12** T.S. Leaf - Monocot
- STB-13** T.S. Leaf - Dicot
- STB-14** Types of Leaves
- STB-15** Root Systems
- STB-16** Structure of Flower
- STB-17** Calyx and Corolla
- STB-18** Inflorescences
- STB-19** Fruits
- STB-20** The Seed : Structure & Germination
- STB-21** Germination of Seed : Bean & Pea
- STB-22** Dispersal of Fruits & Seeds
- STB-23** Photosynthesis
- STB-24** Plant Diseases



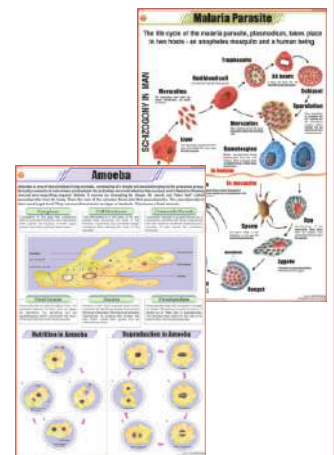
- STB-25** Reproduction in Plants
- STB-26** Pollination
- STB-27** Double Fertilization
- STB-28** Artificial Vegetative Propagation
- STB-29** Stem Modifications
- STB-30** Root Modifications
- STB-31** Hydrophytes
- STB-32** Mesophytes
- STB-33** Xerophytes
- STB-34** Insectivorous Plants
- STB-35** Fungi
- STB-36** Algae
- STB-37** Viruses
- STB-38** Bacteria
- STB-39** Life Cycle of Fern
- STB-40** Life Cycle of Moss
- STB-41** Spirogyra
- STB-42** Life Cycle of Mushroom
- STB-43** Leaf Modification
- STB-44** Parasitic Plants
- STB-45** Mucor : Structure & Reproduction
- STB-46** Regions of Root
- STB-47** Vascular Bundle
- STB-48** Secondary Growth

## ZOOLOGY CHARTS

**Laminated - Size 58 x 90 cms Each ₹ 220.00**

- STZ-01** Animal Kingdom
- STZ-02** Animal Cell
- STZ-03** Animal Cell Organelles
- STZ-04** Animal Tissues
- STZ-05** Animal Cell Mitosis
- STZ-06** Animal Cell Meiosis
- STZ-07** Gametogenesis in Animals
- STZ-08** Fertilization in Animals
- STZ-09** Protozoa
- STZ-10** Amoeba
- STZ-11** Malaria Parasite
- STZ-12** Paramoecium
- STZ-13** Hydra
- STZ-14** Liver Fluke
- STZ-15** Tapeworm
- STZ-16** Roundworm (Ascaris)
- STZ-17** Hookworm
- STZ-18** Life History of Mosquito
- STZ-19** Life Cycle of Butterfly
- STZ-20** Life History of Housefly
- STZ-21** Life History of frog
- STZ-22** Human Blood
- STZ-23** Body's Defense
- STZ-24** Harmful Insects

- STZ-25** Beneficial Insects
- STZ-26** Food Habits of Birds
- STZ-27** Fish Anatomy
- STZ-28** Birth of a Bird's Chick
- STZ-29** Earthworm I : Ext. Morphology & Reproduction
- STZ-30** Earthworm II : Blood Circulation, Respiratory & Nervous System
- STZ-31** Earthworm III : Digestion, Skin & Excretion
- STZ-32** Cockroach I: Morphology & Reproduction
- STZ-33** Cockroach II : Blood Circulation, Respiratory & Nervous System
- STZ-34** Cockroach III : Digestion, Excretory, Skin & Muscles
- STZ-35** Vertebrate Classes
- STZ-36** Sense Organs
- STZ-37** General Dissection of Rabbit
- STZ-38** Neuron
- STZ-39** Early Development of the Frog
- STZ-40** Frog's Morphology & Internal Structure
- STZ-41** Frog's Urogenital System
- STZ-42** Frog's Circulatory System
- STZ-43** Frog's Nervous System
- STZ-44** Frog's Muscular System
- STZ-45** Life Cycle of Cockroach
- STZ-46** Skeleton of a Bird
- STZ-47** Skeleton of Rabbit

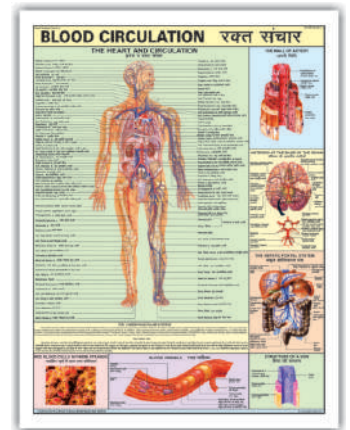




## DETAILED HUMAN PHYSIOLOGY CHARTS

**Laminated Size 70 x 100 cms    Each ₹ 200.00**

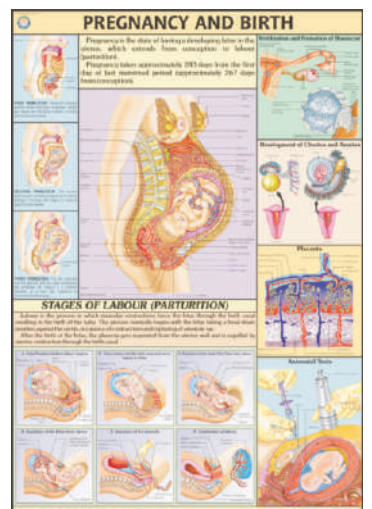
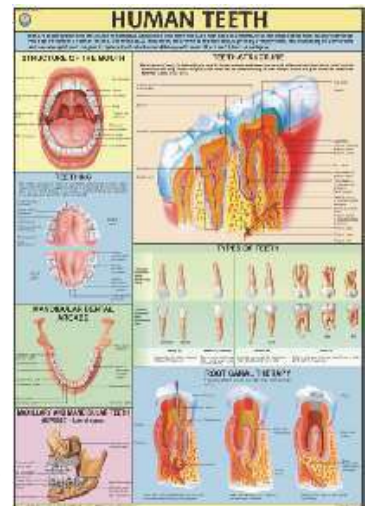
- |  |   |
|--|---|
| <b>HP-01</b> Skeleton System                 | <b>HP-10</b> Human Heart                  |
| <b>HP-02</b> Muscular System                 | <b>HP-11</b> Endocrine System             |
| <b>HP-03</b> Blood Circulation               | <b>HP-12</b> Reproductive System (Male)   |
| <b>HP-04</b> Nervous System                  | <b>HP-13</b> Reproductive System (Female) |
| <b>HP-05</b> Digestive System                | <b>HP-14</b> Human Embryology             |
| <b>HP-06</b> Eye                             | <b>HP-15</b> Lymphatic System             |
| <b>HP-07</b> Ear                             | <b>HP-16</b> Brain                        |
| <b>HP-08</b> Kidney, Skin & Excretory Organs | <b>HP-17</b> Teeth & Dental Care          |
| <b>HP-09</b> Respiratory System              | <b>HP-18</b> Human Anatomy                |



## DETAILED HUMAN PHYSIOLOGY CHARTS

**Synthetic Size 70 x 100 cms    Each ₹ 280.00**

- |   |  |
|---|--|
| <b>HP-01S</b> The Skeleton                    | <b>HP-17S</b> Human Teeth                    |
| <b>HP-02S</b> Muscles                         | <b>HP-18S</b> Pregnancy & Birth              |
| <b>HP-03S</b> Blood Circulation               | <b>HP-19S</b> Human Kidney                   |
| <b>HP-04S</b> Nervous System                  | <b>HP-20S</b> Urinary Tract                  |
| <b>HP-05S</b> Digestive System                | <b>HP-21S</b> Human Skull                    |
| <b>HP-06S</b> Eye                             | <b>HP-22S</b> Ear, Nose, Throat              |
| <b>HP-07S</b> Ear                             | <b>HP-23S</b> Liver, Gall bladder & Pancreas |
| <b>HP-08S</b> Kidney, Skin & Excretory Organs | <b>HP-24S</b> Human Lungs                    |
| <b>HP-09S</b> The Respiratory System          | <b>HP-25S</b> Joints of the Body             |
| <b>HP-10S</b> Human Heart                     | <b>HP-26S</b> Immune System                  |
| <b>HP-11S</b> Endocrine System                | <b>HP-27S</b> Human Skin                     |
| <b>HP-12S</b> Reproductive (Male)             | <b>HP-28S</b> Movable Joints                 |
| <b>HP-13S</b> Reproductive (Female)           | <b>HP-29S</b> Human Spinal Cord              |
| <b>HP-14S</b> Human Embryology                | <b>HP-30S</b> Menstrual Cycle                |
| <b>HP-15S</b> Lymphatic System                | <b>HP-31S</b> Contraception (Birth Control)  |
| <b>HP-16S</b> Human Brain                     | <b>HP-32S</b> Vertebral Column               |

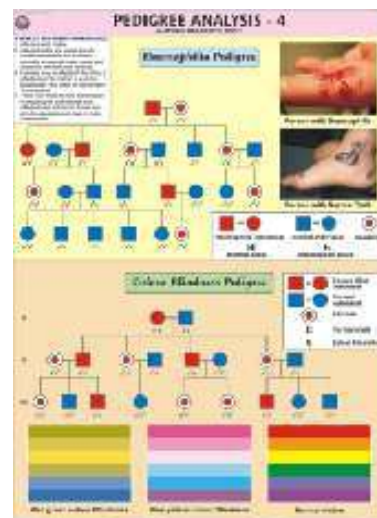


## CHARTS ON GENETICS & EVOLUTION

**Synthetic Size 70 x 100 cms**

**Each ₹ 280.00**

- GE-01S** Pedigree Analysis-1 : Standard Symbols used in Pedigree Analysis & Sample Pedigree
- GE-02S** Pedigree Analysis-2 : Autosomal Dominant Trait Pedigree
- GE-03S** Pedigree Analysis-3 : Autosomal Recessive Trait Pedigree
- GE-04S** Pedigree Analysis-4 : X-Linked Recessive Trait Pedigree
- GE-05S** Pedigree Analysis-5 : X-Linked Dominant Trait Pedigree
- GE-06S** Pedigree Analysis-6 : Y-Linked Trait Pedigree
- GE-07S** Homologous Organs-Animals : Bat, Turtle, Horse, Human, Bird & Dolphin
- GE-08S** Homologous Organs-Animals : Bird, Butterfly, Pterosaur & Bat
- GE-09S** Homologous Organs-Plants : Bougainvillea, Cucurbita, Euphorbia, Opuntia etc.
- GE-10S** Homologous Organs-Plants : Pyracantha, Berberis Vulgaris, Prosopis Grandulosa, Black Locust
- GE-11S** Hybridisation-1 (Monohybrid Cross) : Cross between Purple & White Coloured Flower
- GE-12S** Hybridisation-2 (Dihybrid Cross) : Cross between Pea Plants differing in two traits
- GE-13S** Hybridisation-3 (Incomplete Dominance) : Cross between Red & White Snapdragon Flower



## CHARTS ON AIDS

**Synthetic Size 70 x 100 cms**

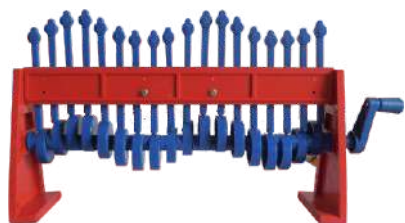
**Each ₹ 280.00**

- AS-01S** HIV
- AS-02S** Transmission of HIV
- AS-03S** Prevention
- AS-04S** How AIDS is not transmitted
- AS-05S** Progress of Infection
- AS-06S** Opportunistic Diseases
- AS-07S** Sexually Transmitted Diseases
- HP-26S** Human Immune System





## PHYSICS MODELS



**PH01**  
**Wave Motion**  
₹ 1300.00



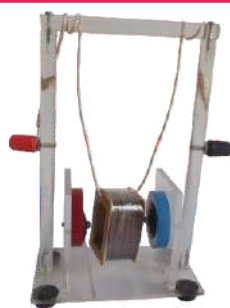
**PH02**  
**Blast Furnace**  
₹ 2100.00



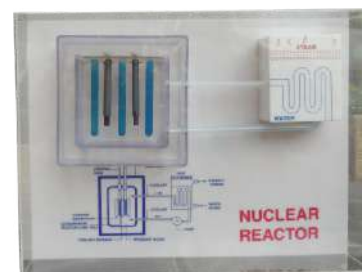
**PH03**  
**Wind Mill**  
₹ 1500.00



**PH04**  
**Fleming Right Hand Rule**  
₹ 1450.00



**PH05**  
**Fleming Left Hand Rule**  
₹ 1450.00



**PH06**  
**Nuclear Reactor**  
₹ 1850.00



**PH07**  
**Electric Motor**  
₹ 1200.00



**PH08**  
**Generator Model**  
₹ 1700.00



**PH09**  
**Solar Energy Kit**  
₹ 1850.00

PH-10	Satellite Working Model	₹ 1350.00	PH-15	Solar Pump	₹ 1200.00
PH-11	Water Voltmeter	₹ 1250.00	PH-16	Solar Fan	₹ 800.00
PH-12	Traffic Light Model	₹ 1800.00	PH-17	Solar Bulb	₹ 500.00
PH-13	Space Shuttle Model	₹ 2600.00	PH-18	Floating Magnet	₹ 500.00
PH-14	Petroleum Purification Model	₹ 4250.00	PH-19	Simple Balance	₹ 1200.00

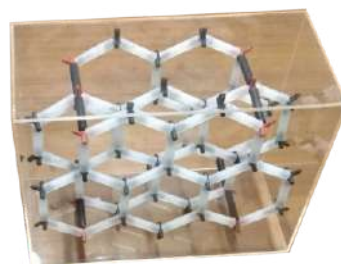
## CHEMISTRY MODELS



**CH01**  
**Sulphur**  
₹ 500.00



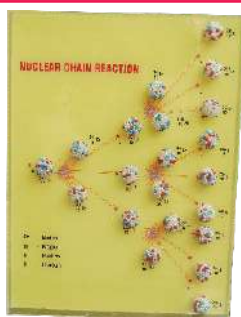
**CH02**  
**Sodium Chloride**  
₹ 1050.00



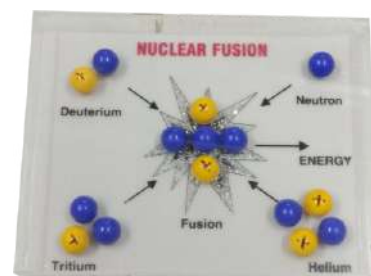
**CH03**  
**Diamond Crystal**  
₹ 1350.00



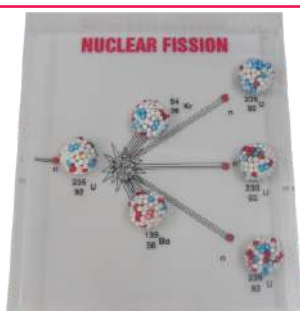
**CH04**  
**Hydrocarbon (Set of 10)**  
₹ 2500.00



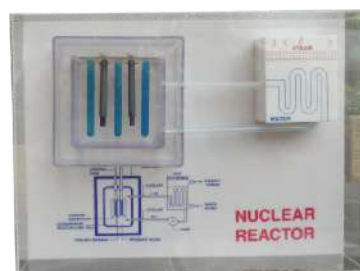
**CH05**  
**Nuclear Chain Reaction**  
₹ 2000.00



**CH06**  
**Nuclear Fusion**  
₹ 1350.00



**CH07**  
**Nuclear Fission**  
₹ 1350.00

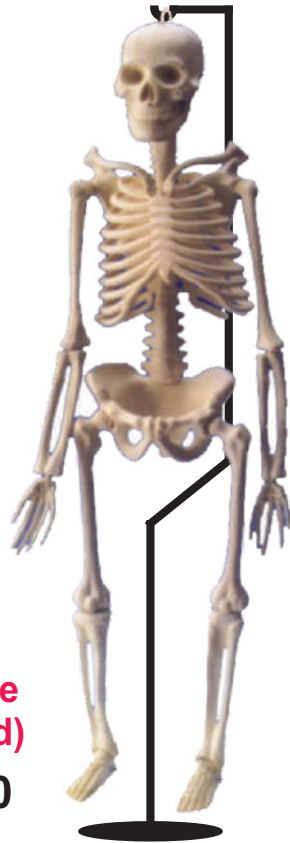


**CH08**  
**Nuclear Reactor**  
₹ 1850.00

<b>CH-10 Carbon Nano Tube</b>	<b>₹ 4600.00</b>	<b>CH-15 Formation of Chlorine ion</b>	<b>₹ 2000.00</b>
<b>CH-11 Bucky Ball Model C-60</b>	<b>₹ 2000.00</b>	<b>CH-16 Covalent Bond in Water Molecules</b>	<b>₹ 1350.00</b>
<b>CH-12 Fullerenes Crystal Model</b>	<b>₹ 2000.00</b>	<b>CH-17 Silicon Atomic Structure</b>	<b>₹ 1000.00</b>
<b>CH-13 Helium Molecules</b>	<b>₹ 1000.00</b>	<b>CH-18 Yellow Phosphorous Molecules</b>	<b>₹ 500.00</b>
<b>CH-14 Isotopes of Hydrogen</b>	<b>₹ 850.00</b>	<b>CH-19 Black Phosphorous Molecules</b>	<b>₹ 550.00</b>



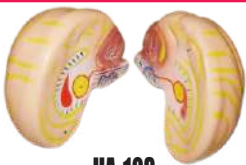
## INDIAN MODELS ON HUMAN ANATOMY



**HA-101**  
**HUMAN SKELETON**  
 Life Size  
 Made of Fibre  
 (with Stand)  
 ₹ 6500.00



**HA-102 HUMAN TORSO**  
 A. LIFE SIZE ₹ 6500.00  
 B. SMALL SIZE ₹ 3000.00



**HA-103**  
**HUMAN BRAIN**  
 ₹ 480.00



**HA-104**  
**HUMAN EAR**  
 ₹ 480.00



**HA-109**  
**HUMAN EMBRYO (SET OF 9)**  
 ₹ 5000.00 (Per Set)



**HA-105**  
**HUMAN LUNGS**  
 ₹ 480.00



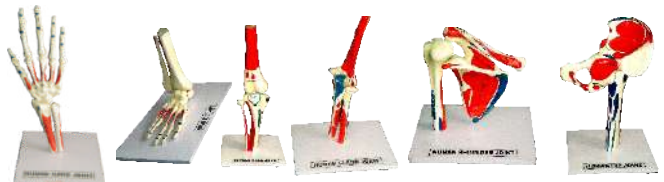
**HA-106**  
**HUMAN HEART**  
 ₹ 480.00



**HA-107**  
**HUMAN KIDNEY**  
 ₹ 480.00



**HA-108**  
**HUMAN EYE**  
 ₹ 480.00



**HA-110**  
**HUMAN JOINTS (set of 6)**  
 ₹ 5400.00 (Per Set)

## HUMAN ANATOMY 3-D MODELS

Deluxe quality, mounted on wooden board ₹ 1000.00 Each

<b>HA-01</b> Teeth	<b>HA-16</b> Heart
<b>HA-02</b> Circulatory System	<b>HA-17</b> Eye
<b>HA-03</b> Digestive System	<b>HA-18</b> Ear
<b>HA-04</b> Respiratory System	<b>HA-19</b> Male Pelvis
<b>HA-05</b> Nervous System	<b>HA-20</b> Female Pelvis
<b>HA-06</b> Skeleton	<b>HA-21</b> Reproductive Organs (Female)
<b>HA-07</b> Head & Neck	<b>HA-22</b> Reproductive Organs (Male)
<b>HA-08</b> Skin	<b>HA-23</b> Lungs
<b>HA-09</b> Mouth	<b>HA-24</b> Skull
<b>HA-10</b> Tongue	<b>HA-25</b> Excretory System
<b>HA-11</b> Spinal Cord	<b>HA-26</b> Endocrine System Male
<b>HA-12</b> Stomach	<b>HA-27</b> Endocrine System Female
<b>HA-13</b> Liver	<b>HA-28</b> Muscular System Front View
<b>HA-14</b> Kidney	<b>HA-29</b> Muscular System Back View
<b>HA-15</b> Brain	<b>HA-30</b> Nose



## BOTANY MODELS

Model Size 60 x 45 cm ₹ 2400.00 Each

<b>BMB-01</b> Plant Cell	<b>BMB-08</b> T.S. Monocot Root	<b>BMB-15</b> Life Cycle : Moss
<b>BMB-02</b> Germination of Seed	<b>BMB-09</b> T.S. Dicot Root	<b>BMB-16</b> Life Cycle : Fern
<b>BMB-03</b> Fertilization & Angiosperms	<b>BMB-10</b> T.S. Monocot Stem	<b>BMB-17</b> Life Cycle : Fungus
<b>BMB-04</b> Plant Cell Meiosis	<b>BMB-11</b> T.S. Dicot Stem	<b>BMB-18</b> Spirogyra
<b>BMB-05</b> Plant Cell Mitosis	<b>BMB-12</b> T.S. Monocot Leaf	<b>BMB-19</b> Pitcher Plant
<b>BMB-06</b> L.S. Flower	<b>BMB-13</b> T.S. Dicot Leaf	<b>BMB-20</b> Funaria Plant
<b>BMB-07</b> L.S. Ovary	<b>BMB-14</b> Root Tip	

## ZOOLOGY MODELS

Model Size 60 x 45 cm ₹ 2400.00 Each

<b>BMZ-01</b> Animal Cell	<b>BMZ-08</b> Malarial Parasite	<b>BMZ-15</b> Development of Frog
<b>BMZ-02</b> Animal Cell Meiosis	<b>BMZ-09</b> Bacteria	<b>BMZ-16</b> Life History of Silk Worm
<b>BMZ-03</b> Animal Cell Mitosis	<b>BMZ-10</b> Virus	<b>BMZ-17</b> Life History of Mosquito
<b>BMZ-04</b> Amoeba	<b>BMZ-11</b> Frog Dissection	<b>BMZ-18</b> Life History of Honey Bee
<b>BMZ-05</b> Paramecium	<b>BMZ-12</b> Rat Dissection	<b>BMZ-19</b> Life History of Butterfly
<b>BMZ-06</b> Hydra	<b>BMZ-13</b> Fish Dissection	<b>BMZ-20</b> Life Cycle of Tapeworm
<b>BMZ-07</b> Euglena	<b>BMZ-14</b> Rabbit Dissection	



**BM-01**  
**PLANT CELL**  
₹ 750.00



**BM-02**  
**TYPICAL FLOWER**  
₹ 750.00



**BM-03**  
**FLOWER**  
**ON STAND**  
₹ 1650.00



**ZM-01**  
**ANIMAL CELL**  
₹ 750.00



## IMPORTED MODELS ON HUMAN ANATOMY



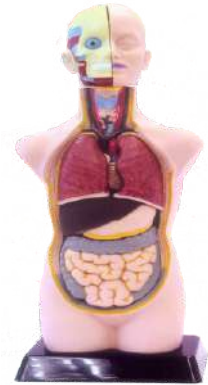
**HUMAN  
SKELETON  
MODELS**



- RI-001 LIFE SIZE MADE OF PVC PLASTIC**  
₹ 29500.00
- RI-002 SKELETON WITH NERVES & BLOOD  
VESSELS (85 cms)** ₹ 10160.00
- RI-003 MINI SKELETON  
(45 cms)** ₹ 1800.00
- RI-004 DISARTICULATED SKELETON  
(approx. 200 bones)** ₹ 15200.00



**RI-005 HUMAN  
TORSO-UNISEX-85 CMS  
(23 PARTS)**  
₹ 30000.00



**RI-006 HUMAN  
TORSO-SMALL  
46 cms  
(23 PARTS)**  
₹ 5000.00



**RI-007 DENTAL  
MODEL-SMALL**  
₹ 700.00



**RI-008 DENTAL  
MODEL-JUMBO**  
₹ 2500.00



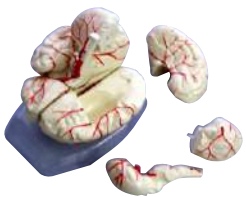
**RI-009 JUMBO  
HEART MODEL**  
₹ 5800.00



**RI-010 GIANT  
EYE MODEL**  
₹ 4200.00



**RI-011 KIDNEY  
MODEL**  
₹ 3600.00



**RI-012 BRAIN  
WITH ARTERIES**  
₹ 3700.00



**RI-013 GIANT  
EAR MODEL**  
₹ 4450.00



**RI-014 LIVER,  
PANCREAS &  
DUODENUM**  
₹ 4250.00



**RI-015 PUMPING  
HEART MODEL**  
₹ 2600.00



**RI-016 STOMACH  
MODEL**  
₹ 3700.00



**RI-017 SHOULDER  
JOINT**  
₹ 2400.00



**RI-018 HIP  
JOINT**  
₹ 2500.00



**RI-019 KNEE  
JOINT**  
₹ 2600.00



**RI-020 ELBOW  
JOINT**  
₹ 2300.00



**RI-021 FOOT  
JOINT**  
₹ 2800.00



**RI-022 HAND  
JOINT**  
₹ 2600.00

## IMPORTED MODELS ON HUMAN ANATOMY



**RI-023 ADULT  
MALE PELVIS**  
₹ 3200.00



**RI-024 ADULT  
FEMALE PELVIS**  
₹ 3200.00



**RI-025 FEMALE  
PELVIC MUSCLES  
& ORGANS**  
₹ 5450.00



**RI-026 BIRTH  
DEMONSTRATION  
MODEL**  
₹ 5600.00



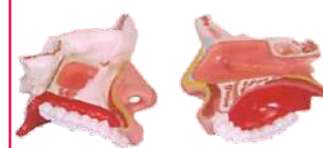
**RI-027 MALE  
UROGENITAL  
SYSTEM**  
₹ 3900.00



**RI-028  
FEMALE  
UROGENITAL  
SYSTEM** ₹ 3900.00



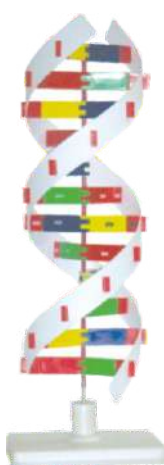
**RI-029 SKIN MODEL  
ENLARGED**  
₹ 4450.00



**RI-030 MODEL OF  
NASAL CAVITY**  
₹ 2600.00



**RI-031 HUMAN  
LARYNX  
MODEL**  
₹ 2600.00



**RI-032  
DNA MODEL**  
₹ 2500.00



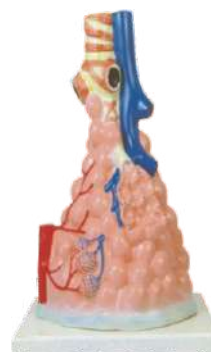
**RI-033 LARYNX, HEART  
& LUNGS MODEL**  
₹ 12600.00



**RI-034 TRANSPARENT  
LUNG SEGMENT MODEL**  
₹ 11300.00



**RI-037 LIFE SIZE  
SKULL MODEL**  
₹ 3850.00



**RI-038 PULMONARY  
ALVEOLI MODEL**  
₹ 3700.00



**RI-039  
VERTEBRAL  
WITH PELVIS &  
FEMUR HEADS**  
₹ 7300.00



## PORTRAITS OF GREAT PERSONALITIES



Size 31 × 43 Cms (approx.) ₹ 450.00 Each  
 Size 37 × 50 Cms (approx.) ₹ 700.00 Each  
 Size 45 × 60 Cms (approx.) ₹ 1300.00 Each



### GREAT SCIENTISTS

- |  |   |  |
|--|---|--|
| <b>S-01</b> Charles Robert Darwin(B)     | <b>S-42</b> Dmitri I. Mendeleef(C)      | <b>S-83</b> Robert Hooke               |
| <b>S-02</b> Gregor Mendel(B)             | <b>S-43</b> Burbank Luther(B)           | <b>S-84</b> S.R. Ranganathan           |
| <b>S-03</b> Lamarck(B)                   | <b>S-44</b> S.N. Bose(P)                | <b>S-85</b> J.B.S. Haldane             |
| <b>S-04</b> Louis Pasteur(B)             | <b>S-45</b> M.N. Saha(P)                | <b>S-86</b> Guglielmo Marconi          |
| <b>S-05</b> Dr. William Harvey(B)        | <b>S-46</b> K.S. Krishnan(P)            | <b>S-87</b> Wilbur Wright              |
| <b>S-06</b> Leonardo-da-Vinci(B)         | <b>S-47</b> K.N. Bahl(B)                | <b>S-88</b> Orville Wright             |
| <b>S-07</b> Sir Joseph Lister(B)         | <b>S-48</b> J.J. Thomson(P)             | <b>S-89</b> Neil Armstrong             |
| <b>S-08</b> Anton Van Leeuwenhoek(B)     | <b>S-49</b> Neils Bohr(P)               | <b>S-90</b> Wilhelm Roentgen           |
| <b>S-09</b> Carl Von Linnaeus(B)         | <b>S-50</b> Gilbert Newton Lewis(C)     | <b>S-91</b> S. Chandrasekhar           |
| <b>S-10</b> Edward Jenner(B)             | <b>S-51</b> A.P.J. Abdul Kalam(P)       | <b>S-92</b> Lord Kelvin                |
| <b>S-11</b> Sir James Young Simpson(B)   | <b>S-52</b> Dr. Vikram Sarabhai(P)      | <b>S-93</b> Charles Babbage            |
| <b>S-12</b> Thomas Henry Huxley(B)       | <b>S-53</b> Aryabhata(P,A & M)          | <b>S-94</b> Friedrich Wohler           |
| <b>S-13</b> Sir Edwin Ray Lankester(B)   | <b>S-54</b> Dr. S.S. Joshi(C)           | <b>S-95</b> Frederick William Herschel |
| <b>S-14</b> Sir Ronald Ross(B)           | <b>S-55</b> Sir Alexander Fleming(B)    | <b>S-96</b> J. J. Berzelius            |
| <b>S-15</b> Hugo De-vries(B)             | <b>S-56</b> D. Mata Parshad(C)          | <b>S-97</b> James Chadwick             |
| <b>S-16</b> Sir Charles Bell(B)          | <b>S-57</b> Benjamin Franklin(P)        | <b>S-98</b> Dr. Vijay P Bhatkar        |
| <b>S-17</b> Alfred Russel Wallace(B)     | <b>S-58</b> Ernest Rutherford(P & C)    | <b>S-99</b> C. N. R. Rao               |
| <b>S-18</b> Sir J. C. Bose(B)            | <b>S-59</b> Dr. Raj Ramanna(P)          | <b>S-100</b> George Boole              |
| <b>S-19</b> Dr. Birbal Sahni(B)          | <b>S-60</b> Nicholas Copernicus(A & P)  | <b>S-101</b> Albert Abraham Michelson  |
| <b>S-20</b> Sunder Lal Hora(B)           | <b>S-61</b> Alessandro Volta(P)         | <b>S-102</b> Stephen Hawking           |
| <b>S-21</b> Galileo Galilei(P)           | <b>S-62</b> Alfred Nobel(C)             | <b>S-103</b> Amedeo Avogadro           |
| <b>S-22</b> Sir Issac Newton(P)          | <b>S-63</b> Anton Hnery Bekuerel(P)     | <b>S-104</b> Johannes Gutenberg        |
| <b>S-23</b> Sir C.V. Raman(P)            | <b>S-64</b> Atovan Gerok(P)             | <b>S-105</b> Pierre Curie              |
| <b>S-24</b> Dr. H.J. Bhabha(P)           | <b>S-65</b> Benjemin Thomson(P)         | <b>S-106</b> Hippocrates               |
| <b>S-25</b> Archemedes(P)                | <b>S-66</b> Crick(B)                    | <b>S-107</b> Hermann Helmholtz         |
| <b>S-26</b> Albert Einstein(P)           | <b>S-67</b> Watson(B)                   | <b>S-108</b> Charles Herbert Best      |
| <b>S-27</b> Thomas Alva Edison(P)        | <b>S-68</b> Edward Victor Aplaton(P)    | <b>S-109</b> Fredrick Grant Banting    |
| <b>S-28</b> Robert Boyle(P&C)            | <b>S-69</b> James Clark Maxwel(P)       | <b>S-110</b> Karl Landstenier          |
| <b>S-29</b> Marie Curie(P&C)             | <b>S-70</b> Jessek Luious Gelusale(P&C) | <b>S-111</b> Robert Koch               |
| <b>S-30</b> Michael Faraday(C)           | <b>S-71</b> Johns Kepeler(A & P)        | <b>S-112</b> Stephen Hales             |
| <b>S-31</b> John Dalton(C)               | <b>S-72</b> Kalpana Chawla(A & P)       | <b>S-113</b> Rene T H Laennec          |
| <b>S-32</b> Dr. P.C. Ray(C)              | <b>S-73</b> Max Plank(P)                | <b>S-114</b> Susruta                   |
| <b>S-33</b> Dr. H.G. Khorana(B & C)      | <b>S-74</b> Panchanan Maheshwari(B)     | <b>S-115</b> Edward Jenner             |
| <b>S-34</b> Dr. S.S. Bhatnagar(C)        | <b>S-75</b> Varah Mihir(A,P & M)        | <b>S-116</b> Sir Joseph Lister         |
| <b>S-35</b> S. Ramanujan(P & M)          | <b>S-76</b> Sunita Williams(A)          | <b>S-117</b> Morgagi                   |
| <b>S-36</b> Antoine Laurent Lavoisier(C) | <b>S-77</b> James Watt                  | <b>S-118</b> Galen                     |
| <b>S-37</b> William Ramsay(C)            | <b>S-78</b> Andre Marie Ampere          | <b>S-119</b> Charles Sherrington       |
| <b>S-38</b> Humphry Davy(C)              | <b>S-79</b> A. Graham Bell              | <b>S-120</b> Samuel Hahnemann          |
| <b>S-39</b> August Weismann(B)           | <b>S-80</b> Edwin Powell Hubble         | <b>S-121</b> Maharishi Charak          |
| <b>S-40</b> Joseph Priestley(C)          | <b>S-81</b> Rakesh Sharma               | <b>S-122</b> Dhanvantri                |
| <b>S-41</b> Aristotle(B)                 | <b>S-82</b> M.S. Swaminathan            | <b>S-123</b> Ashwini Kumars            |

## PORTRAITS OF GREAT PERSONALITIES

Size 31 × 43 Cms (approx.)	₹ 450.00 Each
Size 37 × 50 Cms (approx.)	₹ 700.00 Each
Size 45 × 60 Cms (approx.)	₹ 1300.00 Each

### LAB SAFETY RULES

- LSR-01** Chemical Reaction Must Be Supervised
- LSR-02** Do Not Add Water to Acid, Add Acid to Water
- LSR-03** Keep First Aid Box Handy
- LSR-04** Keep Our Face Away from Reaction
- LSR-05** Learn to Operate Fire Extinguisher
- LSR-06** Make Sure Sink Is Not Blocked
- LSR-07** Never Try To Taste The Chemicals
- LSR-08** No Smoking In The Lab
- LSR-09** Wear Gloves & Goggles During Experiment
- LSR-10** Use Fume Hood

### NURSING

Size 45 x 60 Cms (approx.)

- NU-01** Breast Changes in Pregnancy
- NU-02** Second Stage of Labour
- NU-03** Incomplete Breech Presentation
- NU-04** Uterine Changes in Pregnancy
- NU-05** Third Stage of Labour
- NU-06** Foot Presentation
- NU-07** Face Presentation
- NU-08** First Stage of Labour
- NU-09** Complete Breech Presentation
- NU-10** Shoulder Presentation
- NU-11** Brow Presentation
- NU-12** Caput Succedaneum
- NU-13** Spina Bifida
- NU-14** Twin Pregnancy
- NU-15** Congenital Malformation of New Born
- NU-16** Hydrocephalus
- NU-17** Breast Self Examination
- NU-18** Placenta Praevia
- NU-19** Cleft Lip Palate
- NU-20** Anencephalus

### HEALTH RULES

- HR-01** Height & Weight
- HR-02** No Smoking
- HR-03** Say No to Alcohol
- HR-04** Say No to Drugs

### FIRST AID PART - I

Size 45 x 60 Cms (approx.)

- FA-01** First Aid Basics
- FA-02** First Aid Kit
- FA-03** Action in Emergency
- FA-04** CPR in Infants
- FA-05** CPR for Children
- FA-06** CPR Adult
- FA-07** Chocking in Children
- FA-08** Chocking Adult
- FA-09** Burns
- FA-10** Alcohol Poisoning

### FIRST AID PART - II

Size 45 x 60 Cms (approx.)

- FA-11** Poisoning
- FA-12** How Poisons Affect The Body
- FA-13** The Treatment of Common Poisons
- FA-14** Inhalation of Fumes
- FA-15** Drowning
- FA-16** Managing Asthma Episodes
- FA-17** Fractures
- FA-18** Bites & Strings
- FA-19** Bleeding and Types of Wounds
- FA-20** Bandages

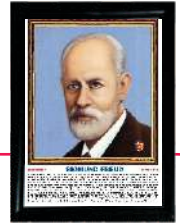




## PORTRAITS OF GREAT PERSONALITIES



Size 31 × 43 Cms (approx.) ₹ 450.00 Each  
 Size 37 × 50 Cms (approx.) ₹ 700.00 Each  
 Size 45 × 60 Cms (approx.) ₹ 1300.00 Each

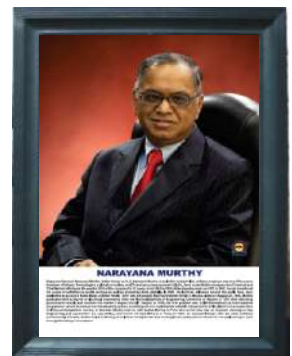
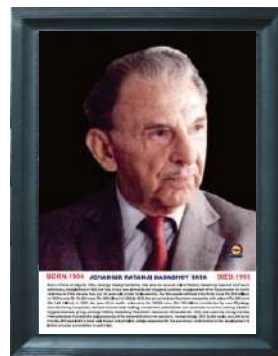
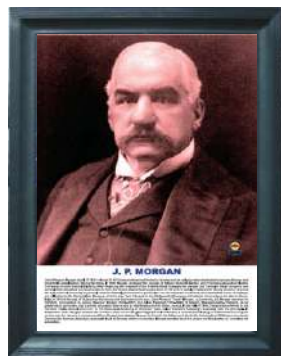
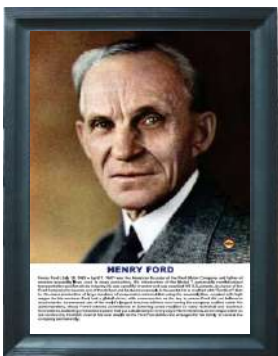


### GEMS OF PSYCHOLOGY

- |                                   |                                     |                                  |
|-----------------------------------|-------------------------------------|----------------------------------|
| <b>PSY-01</b> Abraham H. Maslow   | <b>PSY-26</b> F. A. P. Aveling      | <b>PSY-51</b> Johannes P. Muller |
| <b>PSY-02</b> Albert Bandura      | <b>PSY-27</b> F. J. Gall            | <b>PSY-52</b> John B. Watson     |
| <b>PSY-03</b> Alfred Adler        | <b>PSY-28</b> Francis Galton        | <b>PSY-53</b> John Dewey         |
| <b>PSY-04</b> Alfred Binet        | <b>PSY-29</b> Frederick Perls       | <b>PSY-54</b> John Locke         |
| <b>PSY-05</b> Aristotle           | <b>PSY-30</b> G. S. Hall            | <b>PSY-55</b> Joseph Wolpe       |
| <b>PSY-06</b> B. F. Skinner       | <b>PSY-31</b> George Kelly          | <b>PSY-56</b> Julian Rotter      |
| <b>PSY-07</b> C. L. Hull          | <b>PSY-32</b> Gordon Allport        | <b>PSY-57</b> K. S. Lashley      |
| <b>PSY-08</b> Carl G. Jung        | <b>PSY-33</b> Gottfried W. Liebnitz | <b>PSY-58</b> Karen Horney       |
| <b>PSY-09</b> Carl R. Rogers      | <b>PSY-34</b> Gustav T. Fechner     | <b>PSY-59</b> Kurt Goldstein     |
| <b>PSY-10</b> Charles Bell        | <b>PSY-35</b> Hans J. Eysenck       | <b>PSY-60</b> Kurt Koffka        |
| <b>PSY-11</b> Charles Darwin      | <b>PSY-36</b> Harlow                | <b>PSY-61</b> Kurt Lewin         |
| <b>PSY-12</b> Charles Sherrington | <b>PSY-37</b> Heinz Kohut           | <b>PSY-62</b> Max Wertheimer     |
| <b>PSY-13</b> D.O. Hebb           | <b>PSY-38</b> Henry Murray          | <b>PSY-63</b> Melanie Klein      |
| <b>PSY-14</b> David Hume          | <b>PSY-39</b> Herbert Spencer       | <b>PSY-64</b> Neil E. Miller     |
| <b>PSY-15</b> David Wechsler      | <b>PSY-40</b> Herman Rorschach      | <b>PSY-65</b> Raymond B. Cattell |
| <b>PSY-16</b> Dr. Cyril Burt      | <b>PSY-41</b> Herman V Helmholtz    | <b>PSY-66</b> Rene Descartes     |
| <b>PSY-17</b> E. B. Titchner      | <b>PSY-42</b> Hermann Ebbinghaus    | <b>PSY-67</b> Rollo Reese May    |
| <b>PSY-18</b> E. C. Toleman       | <b>PSY-43</b> Herry S. Sullivan     | <b>PSY-68</b> Sigmund Freud      |
| <b>PSY-19</b> E. H. Weber         | <b>PSY-44</b> Immanuel Kant         | <b>PSY-69</b> Thomas Hobbes      |
| <b>PSY-20</b> Edward L. Thorndike | <b>PSY-45</b> Ivan P. Pavlov        | <b>PSY-70</b> Walter Mischel     |
| <b>PSY-21</b> Edwin Guthire       | <b>PSY-46</b> J. M. Baldwin         | <b>PSY-71</b> Wilhelm Wundt      |
| <b>PSY-22</b> Emil Kraepelin      | <b>PSY-47</b> J. M. Cattell         | <b>PSY-72</b> William James      |
| <b>PSY-23</b> Erich Fromm         | <b>PSY-48</b> J. W. Cannon          | <b>PSY-73</b> William Mc-Dougall |
| <b>PSY-24</b> Erik Erikson        | <b>PSY-49</b> Jean Piaget           | <b>PSY-74</b> William Sheldon    |
| <b>PSY-25</b> Ernest Jone         | <b>PSY-50</b> Johann F. Herbart     | <b>PSY-75</b> Wolfgang Kohler    |

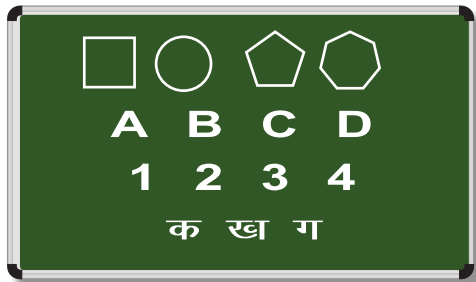
### MANAGEMENT GURUS

- |                                |                                |                                   |
|--------------------------------|--------------------------------|-----------------------------------|
| <b>MG-01</b> Adam Smith        | <b>MG-08</b> Henry Ford        | <b>MG-15</b> J R D Tata           |
| <b>MG-02</b> Alfred P. Sloan   | <b>MG-09</b> J. D. Rockefeller | <b>MG-16</b> Amartya Kumar Sen    |
| <b>MG-03</b> Alvin Toffler     | <b>MG-10</b> Joseph M. Juran   | <b>MG-17</b> Dhirubhai Ambani     |
| <b>MG-04</b> Bill Gates        | <b>MG-11</b> J P Morgan        | <b>MG-18</b> G D Birla            |
| <b>MG-05</b> Dale Carnegie     | <b>MG-12</b> Lee Lacocca       | <b>MG-19</b> Narayana Murthy      |
| <b>MG-06</b> Douglas Mc Gregor | <b>MG-13</b> Warren E Buffett  | <b>MG-20</b> Lakshmi Niwas Mittal |
| <b>MG-07</b> Frederick Taylor  | <b>MG-14</b> Peter F.          |                                   |



## WRITING/DISPLAY BOARDS & ACCESSORIES

### CHALK BOARD



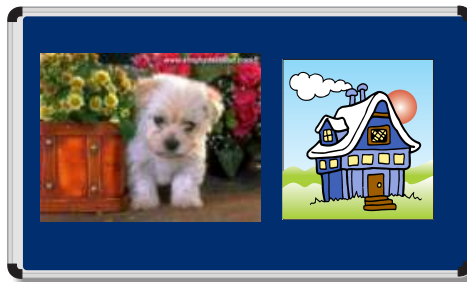
**LAMINATED GREEN  
CHALK BOARD**

₹ 100.00 per sq. ft.

**CERAMIC STEEL MAGNETIC  
CHALK BOARD**

₹ 350.00 per sq. ft.

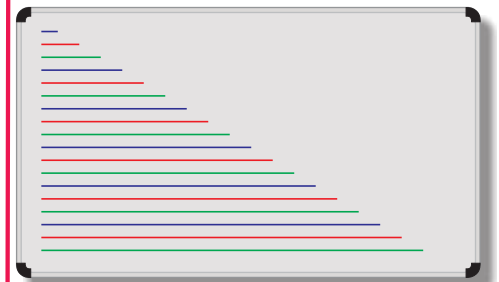
### NOTICE BOARD



**NOTICE BOARD**

₹ 100.00 per sq. ft.

### WHITE BOARD



**LAMINATED WHITE  
MARKER BOARD**

₹ 100.00 per sq. ft.

**CERAMIC STEEL MAGNETIC  
WHITE BOARD**

₹ 350.00 per sq. ft.

### NOTICE BOARD WITH ACRYLIC SHUTTER



Size (approx.)

Price in ₹

in Inches	In cms	Deluxe frame
36 x 24	90 x 60	₹ 1800.00
48 x 36	120 x 90	₹ 3600.00

### DUSTERS FOR BOARDS

<b>DS-01</b>	Wooden Duster	₹ 25.00 each
<b>DS-02</b>	Wooden Duster Superior	₹ 35.00 each
<b>DS-03</b>	Plastic Duster Superior	₹ 50.00 each
<b>DS-04</b>	Plastic Magnetic Duster	₹ 80.00 each

### CHALK FOR BOARDS

<b>DS-05</b>	Indian Make-Dustless	₹ 20.00 per box
<b>DS-06</b>	Indian Make-Coloured	₹ 30.00 per box

### STANDS FOR BOARDS

<b>DS-07</b>	Tripod all metal Stand for Boards upto 160x120cms adjustable	₹ 1500.00
<b>DS-08</b>	Nickelled Heavy Base Pole Stand	₹ 3000.00

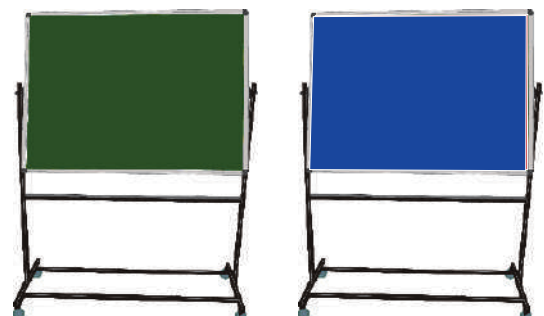
### EXHIBITION DISPLAY SYSTEM



3 Boards of size 4'x3'-White, Green and Notice mounted on 4 Pipe Stands. (Panel can be expanded as long as required by joining more boards on stands)

₹ 15600.00 (Per Set)

### MOVABLE BOARD



Size (approx.)

Price in ₹

in Inches	In cms	Deluxe frame
48 x 36	120 x 90	₹ 4000.00
48 x 72	120 x 180	₹ 5700.00
48 x 96	120 x 240	₹ 7200.00

## LOBBY BOARD

Size 2'x3'  
 Stainless Steel ₹ 15000.00  
 Brass ₹ 20000.00



## GOLD SIGN BOARDS

### Size (approx.) In cms

30 x 15  
 45 x 30  
 60 x 45  
 60 x 60  
 60 x 90  
 60 x 120  
 90 x 120



### Price

₹ 640.00 each  
 ₹ 1240.00 each  
 ₹ 1980.00 each  
 ₹ 2350.00 each  
 ₹ 3400.00 each  
 ₹ 4400.00 each  
 ₹ 5900.00 each

Letter/Figures Size ½" set of 100 ₹ 300.00 per set  
 Letter/Figures Size 1" set of 100 ₹ 400.00 per set  
 Letter/Figures Size 1½" set of 100 ₹ 600.00 per set  
 Pedestal Pole Stand in Brass for Boards ₹ 6000.00 each

## PRESKOGRAPH INTERCHANGEABLE BOARDS / LETTERS & FIGURES



### Size (approx.)

### Price

In Inches	In cms	In ₹
24 x 12	60 x 30	1000.00
24 x 18	60 x 45	1500.00
36 x 24	90 x 60	3000.00
48 x 36	120 x 90	5000.00
60 x 48	150 x 120	7500.00
72 x 48	180 x 120	9000.00

### Size (approx.)

### Price

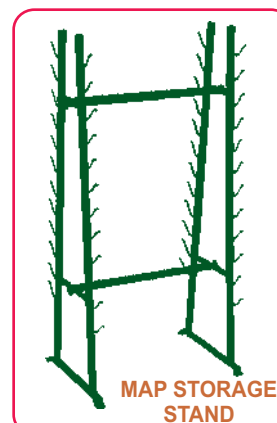
Size ½" set of 100	₹ 150.00 per set
Size ¾" set of 100	₹ 180.00 per set
Size 1" set of 100	₹ 190.00 per set
Size 1½" set of 100	₹ 300.00 per set
Size 2" set of 100	₹ 500.00 per set
Roman Type Size ¾" set of 100	₹ 190.00 per set
Roman Type Size 1" set of 100	₹ 250.00 per set
Roman Type Size 1½" set of 100	₹ 400.00 per set
Comma/ Full Stop set of 100	₹ 150.00 per set
Direction Pointers set of 100	₹ 1800.00 per set
Sleek Pointers set of 100	₹ 200.00 per set

## STORAGE STANDS FOR MAPS & CHARTS

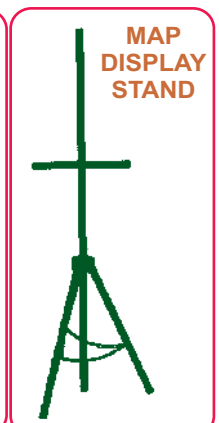
- DS-12** For storing 24 maps made of iron painted ₹ 3200.00  
**DS-13** For storing 36 maps made of Iron painted ₹ 3600.00

## DISPLAY STAND FOR MAPS & CHARTS

- DS-14** For hanging the map in classroom.  
 Light weight & easy to carry ₹ 2200.00



MAP STORAGE STAND



MAP DISPLAY STAND



## PODIUM FOR CLASSROOMS & AUDITORIUM

### ACRYLIC PODIUM



#### PA 1

Acrylic Podium-  
Smoke/Black  
(Wide Pillar  
with Steel Rods)

₹ 15000.00

### ACRYLIC PODIUM



#### PA 2

Acrylic Podium-  
Transparent White  
(Wide Pillar  
with Steel Rods)

₹ 16000.00

### ACRYLIC PODIUM



#### PA 3

Acrylic Podium-  
Smoke/Black  
(Slim Pillar)

₹ 12000.00

### ACRYLIC PODIUM



#### PA 4

Acrylic Podium-  
Transparent White  
(Slim Pillar)

₹ 13000.00

### ACRYLIC PODIUM



#### PA 5

Acrylic Podium-  
Z-Shape

₹ 20000.00

### WOODEN PODIUM



#### PA 6

Wooden Podium-  
Wide Pillar -  
Teak Finish

₹ 14000.00

### WOODEN PODIUM



#### PA 7

Wooden Podium-  
Wide Pillar with  
Drawer

₹ 9000.00

### WOODEN PODIUM



#### PA 8

Wooden Podium-  
With Steel Frame

₹ 22000.00

### KIDS PODIUM



#### PA 9

Wooden Podium  
for Junior Section

₹ 10000.00

### AUDIO PODIUM

#### Key Features :

- Built-in 60W amplifier, one tweeters and tree woofers and built-in MIC.
- Flexible goose neck MIC and lamp
- Two Handheld Wireless Mic
- Two MICs inputs, one line input and four AUX inputs
- R-2015 with optional two VHF handheld or collar wireless MICs, maximum range 10 meters.
- Finish : Black
- 60W rated power output
- MIC length : 47cm : Lamp length : 45cm
- Wooden top and steel bottom, steel body



PA 10  
Audio Podium ₹ 65000.00

# VISUAL TEACHING AIDS

## PROJECTION SCREEN



70" x 50" with folding tripod stand	₹ 3200.00
84" x 60" with folding tripod stand	₹ 5000.00
96" x 70" with folding tripod stand	₹ 6500.00
70" x 50" Motorized	₹ 15000.00
84" x 60" Motorized	₹ 18000.00
96" x 70" Motorized	₹ 25000.00



## SLIDE PROJECTOR

**Manual** ₹ 6000.00



## OVERHEAD PROJECTOR

**Double Lamp** ₹ 9300.00

## OVERHEAD PROJECTOR TRANSPARENCIES

Botany set of 75	₹ 5625.00	Chemistry set of 40	₹ 3000.00
Zoology set of 75	₹ 5625.00	Human Physiology set of 50	₹ 3750.00
Animal Cell & Tissues set of 15	₹ 1125.00	Sense organs set of 20	₹ 1500.00
Chick Embryology set of 20	₹ 1500.00	Mathematics set of 15	₹ 1125.00
Frog Development set of 15	₹ 1125.00	Mathematics set of 50	₹ 3750.00
Mitosis set of 9	₹ 675.00	First Aid set of 50	₹ 3750.00
Meiosis set of 12	₹ 900.00	Geography set of 30	₹ 2250.00
Physics set of 50	₹ 3750.00	Our Universe (Astronomy) set of 10	₹ 750.00

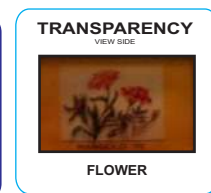
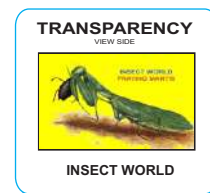
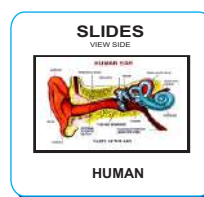
## 2"x2" COLOURED 35 mm SLIDES

Human Physiology set of 50	₹ 1250.00	<b>HEALTH SECTION</b>	Mothercraft set of 30	₹ 750.00
Health Rules set of 15	₹ 375.00		Immunization set of 15	₹ 375.00
Yogasan set of 20	₹ 500.00		Child Welfare set of 20	₹ 500.00
Vitamin set of 10	₹ 250.00		Family Planning set of 100	₹ 2500.00
Common Diseases set of 10	₹ 250.00		Cholera set of 10	₹ 250.00
Human Body set of 10	₹ 250.00		Malaria set of 20	₹ 500.00
Community Cleanliness set of 8	₹ 200.00		Tuberculosis set of 20	₹ 500.00
First Aid set of 50	₹ 1250.00			

Astronomy set of 30	₹ 750.00	<b>OTHER TOPICS</b>	Wonders of World set of 7	₹ 175.00
Geography set of 50	₹ 1250.00		Good Habits set of 20	₹ 500.00
Mineral set of 30	₹ 750.00		Rocket set of 6	₹ 150.00
Rocks set of 25	₹ 625.00			

## SLIDES FOR SCIENCE

Primary Science For Class I set of 40	₹ 1000.00
Primary Science For Class II set of 40	₹ 1000.00
Primary Science For Class III set of 40	₹ 1000.00
Primary Science For Class IV set of 50	₹ 1250.00
Primary Science For Class V set of 50	₹ 1250.00
Science For Class VI set of 50	₹ 1250.00
Science For Class VII set of 50	₹ 1250.00
Science For Class VIII set of 100	₹ 2500.00
Science For Class IX set of 100	₹ 2500.00
Science For Class X set of 100	₹ 2500.00
Physics set of 100	₹ 2500.00
Chemistry set of 100	₹ 2500.00
Biology set of 100	₹ 2500.00



## ZOOLOGY SECTION

Anatomy of Frog set of 30	₹ 750.00	Useful Insects set of 20	₹ 500.00
Anatomy of Rabbit set of 20	₹ 500.00	L.H. Butterfly set of 10	₹ 250.00
Amoeba & Paramecium set of 20	₹ 500.00	L.H. Honey Bee set of 10	₹ 250.00
Animal Histology set of 30	₹ 750.00	L.H. Housefly set of 10	₹ 250.00
Animal Kingdom set of 30	₹ 750.00	L.H. Mosquito set of 10	₹ 250.00
Animal World set of 40	₹ 1000.00	L.H. Silkworm set of 10	₹ 250.00
Beaks & Feet of Birds set of 20	₹ 500.00	Liverfluke & Tapeworm set of 20	₹ 500.00
Birds set of 30	₹ 750.00	Mammals set of 30	₹ 750.00
Cockroach set of 20	₹ 500.00	Meiosis set of 15	₹ 375.00
Earthworm set of 20	₹ 500.00	Mendel Heredity set of 20	₹ 500.00
Chick Embryology set of 20	₹ 500.00	Mitosis set of 10	₹ 250.00
Frog Embryology set of 15	₹ 375.00	Prehistoric Animals set of 20	₹ 500.00
Rabbit Embryology set of 20	₹ 500.00	Protozoa set of 10	₹ 250.00
Evidence of Evolution set of 20	₹ 500.00	Reptiles & Amphibians set of 40	₹ 1000.00
Fishes set of 30	₹ 750.00	Snakes set of 20	₹ 500.00
Hydra & Obelia set of 20	₹ 500.00	Algae Fungi set of 20	₹ 500.00
Harmful Insects set of 20	₹ 500.00	Angiospermic Families set of 15	₹ 375.00

## BOTANY SECTION

Bacteria set of 20	₹ 500.00	Marchantia set of 15	₹ 375.00
Bryophyta & Pteridophyta set of 20	₹ 500.00	Meiosis set of 15	₹ 375.00
Cell Structure set of 20	₹ 500.00	Mitosis set of 10	₹ 250.00
Dispersal of Seeds set of 20	₹ 500.00	Plant Anatomy set of 20	₹ 500.00
Fern set of 10	₹ 250.00	Plant Histology set of 30	₹ 750.00
Fruits set of 20	₹ 500.00	Plant Kingdom set of 30	₹ 750.00
Germination of Seeds set of 20	₹ 500.00	Plant Physiology set of 30	₹ 750.00
Higher Plants set of 20	₹ 500.00	Pollination set of 10	₹ 250.00
Inflorescence set of 10	₹ 250.00	Roots set of 20	₹ 500.00
Insectivorous & Parasitic Plants set of 20	₹ 500.00	Spirogyra set of 20	₹ 500.00
L.H. Mucar set of 15	₹ 375.00	Stems set of 20	₹ 500.00
Leaves set of 20	₹ 500.00	Vegetative Reproduction set of 20	₹ 500.00
		Water Plants set of 10	₹ 250.00

## SPECIAL SLIDES (available In Album Only)

Biology Album for 10+1 set of 100	₹ 3000.00	Chemistry Album for 10+2 set of 100	₹ 3000.00
Biology Album for 10+2 set of 100	₹ 3000.00	Physics Album for 10+2 set of 100	₹ 3000.00
Medicinal Plants set of 100	₹ 3000.00	Rocks, Minerals & Gems set of 150	₹ 4500.00
Histology set of 100	₹ 3000.00	Human Physiology set of 100	₹ 3000.00
Pathology set of 100	₹ 3000.00		



## LIST OF FEW OF OUR SATISFIED CUSTOMERS

<b>Air Force Schools</b>	<b>Navodaya Schools</b>
<b>Akal Academies- Punjab, U.P., H.P.</b>	<b>Navyug Schools-Delhi</b>
<b>Army Public Schools</b>	<b>Presentation Convent-Delhi</b>
<b>Arya Bal Bharti Public School, Panipat (Haryana)</b>	<b>Queen Mary's School-Delhi</b>
<b>Apeejay Schools-Delhi, Haryana, U.P.</b>	<b>Ramjas Schools-Delhi</b>
<b>Bal Bharti Public Schools-Delhi, U.P.</b>	<b>Riverdale Intl. School-U.P.</b>
<b>CRPF Public Schools-Delhi</b>	<b>Rajkiya Pratibha Schools-Delhi</b>
<b>Dav Public Schools</b>	<b>Sachdeva Public Schools- Delhi</b>
<b>Delhi Public Schools</b>	<b>Salwan Public Schools-Delhi</b>
<b>G D Goenka Schools</b>	<b>Sarvodaya Schools</b>
<b>Ganga International Schools-Delhi, Haryana, Punjab</b>	<b>St. Joseph's School-Nagaland</b>
<b>Gurukul Concept School-Karnataka</b>	<b>St. Margaret Schools-Delhi</b>
<b>Jawahar Navodaya Vidyalayas</b>	<b>St. Paul's School-Nagaland</b>
<b>Kendriya Vidyalayas</b>	<b>St. Thomas School-U.P.</b>
<b>Laxman Public School-Delhi</b>	<b>Subodh Public School-Rajasthan</b>
<b>Little Angels School-Haryana</b>	<b>The Vedic Era School, Haryana</b>
<b>Modern School, Barakhamba Road, Delhi</b>	<b>Vishal Bharti Schools-Delhi</b>
<b>Maxfort Schools-Delhi</b>	<b>VSPK International School</b>

### TERMS & CONDITIONS

1. This cancels all our previous catalogues & price lists.
2. All rates are NETT, Ex. Godown. Packing & Forwarding charges extra.
3. Goods will be dispatched within 15 days of receipt of Purchase Order along with the payment.
4. Form/Road Permit, if any, required by the govt. department for the entry of goods in other states will have to be sent along with the Purchase Order.
5. Taxes as per govt. rules will be charged extra.
6. Kindly mention clearly the Catalogue Code and the item code at the time of placing the order.
7. Please mention your VAT/CST registration no. and the name and address of your bankers along with your bank account number.
8. The warranty/responsibility for any quantity shortage or manufacturing defect will be taken in consideration only if the same is intimated immediately on receipt of material, or, at most, within one week (subject to situation so arising).
9. Thereafter, no claim will be entertained under any condition.
10. All disputes are subject to Delhi Jurisdiction only.
11. Prices are subject to change without prior notice.
12. The company reserves the right to discontinue any product at any time.

### DISCLAIMER

All Maps, Charts, Toys, Models etc. depicted in the catalogue are the copyright of their respective publishers & manufacturers. The company is not responsible for any misprinting or misrepresentation in the same. Actual products may vary from the colours or pictures shown in the catalogue.

**IEC :0512045071**

**GST NO.: 07AEVPK6956J1ZM**

# **ROYAL EDUCATIONAL STORES**

**101/11, KHASRA NO. 420, VIVEKANAND MARKET**

**RISHI NAGAR, RANI BAGH, DELHI-110034**

**MOBILE : +91-9312282680, +91-9868269122**

**E-mail : [royaleducationalstores@gmail.com](mailto:royaleducationalstores@gmail.com)**

**Website : [www.royaleducationalstores.com](http://www.royaleducationalstores.com)**